



mei

MOBILIZAÇÃO EMPRESARIAL
PELA INOVAÇÃO

**US-BRA ENTREPRENEURIAL
INNOVATION PARTNERSHIP**

US-BRA ENTREPRENEURIAL INNOVATION PARTNERSHIP

OPERATIONAL MODEL

Matchmaking
Process

Negotiation and
implementation of
partnerships

Monitoring &
Evaluation

MECHANISMS

MEI Dialogues
Technical Missions
Web platform
(Observatório da Inovação)
Partnership proposals



CNI and CoC full support

MAIN ISSUES

Cash Flow
IP Flow
Types of Agreements
Instruments
(BNDES, FINEP, CNI, etc.)



CNI and CoC support, if necessary

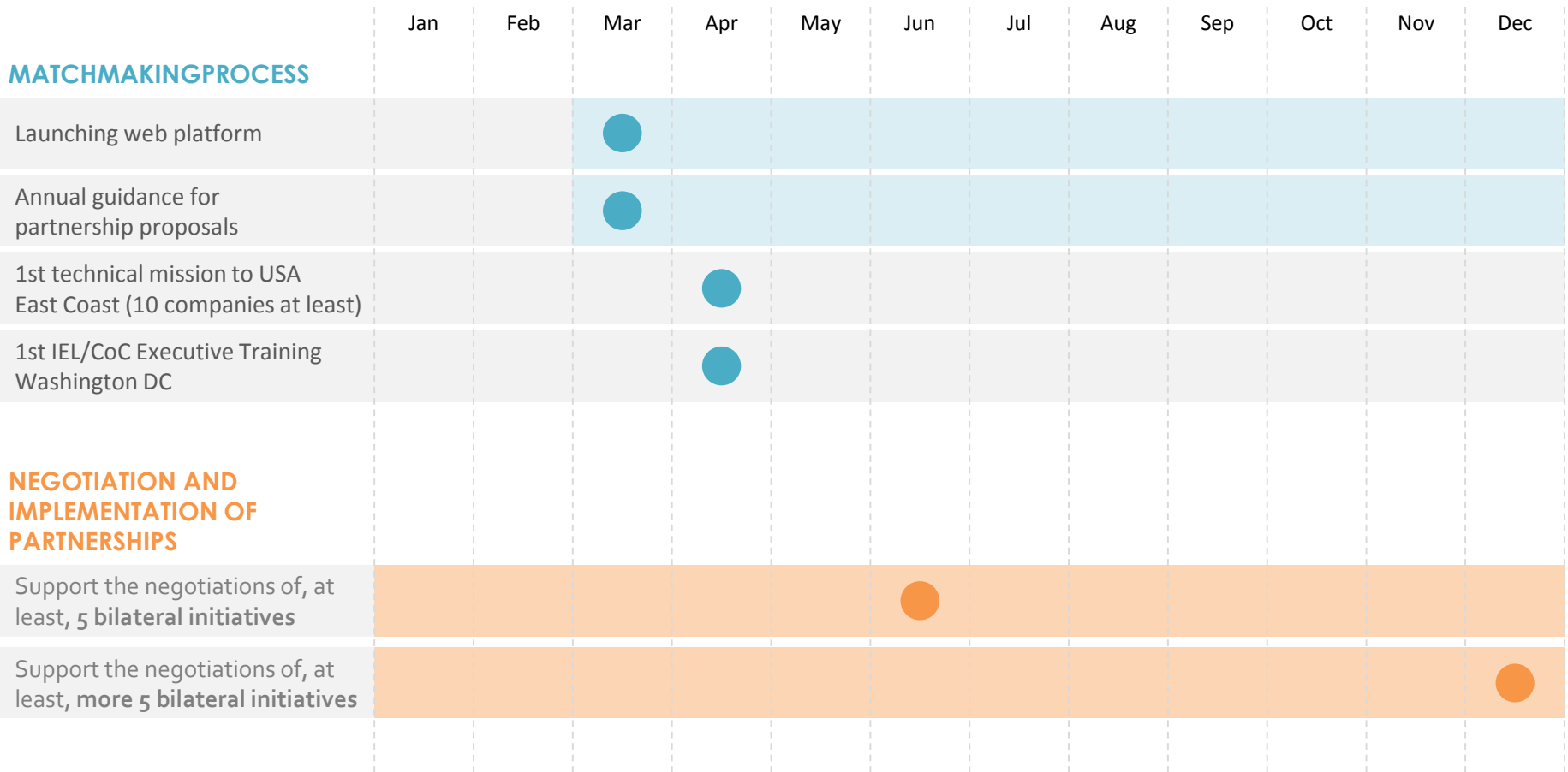
DESIRED OUTCOMES

New products
New businesses
Talent development
for future
technologies



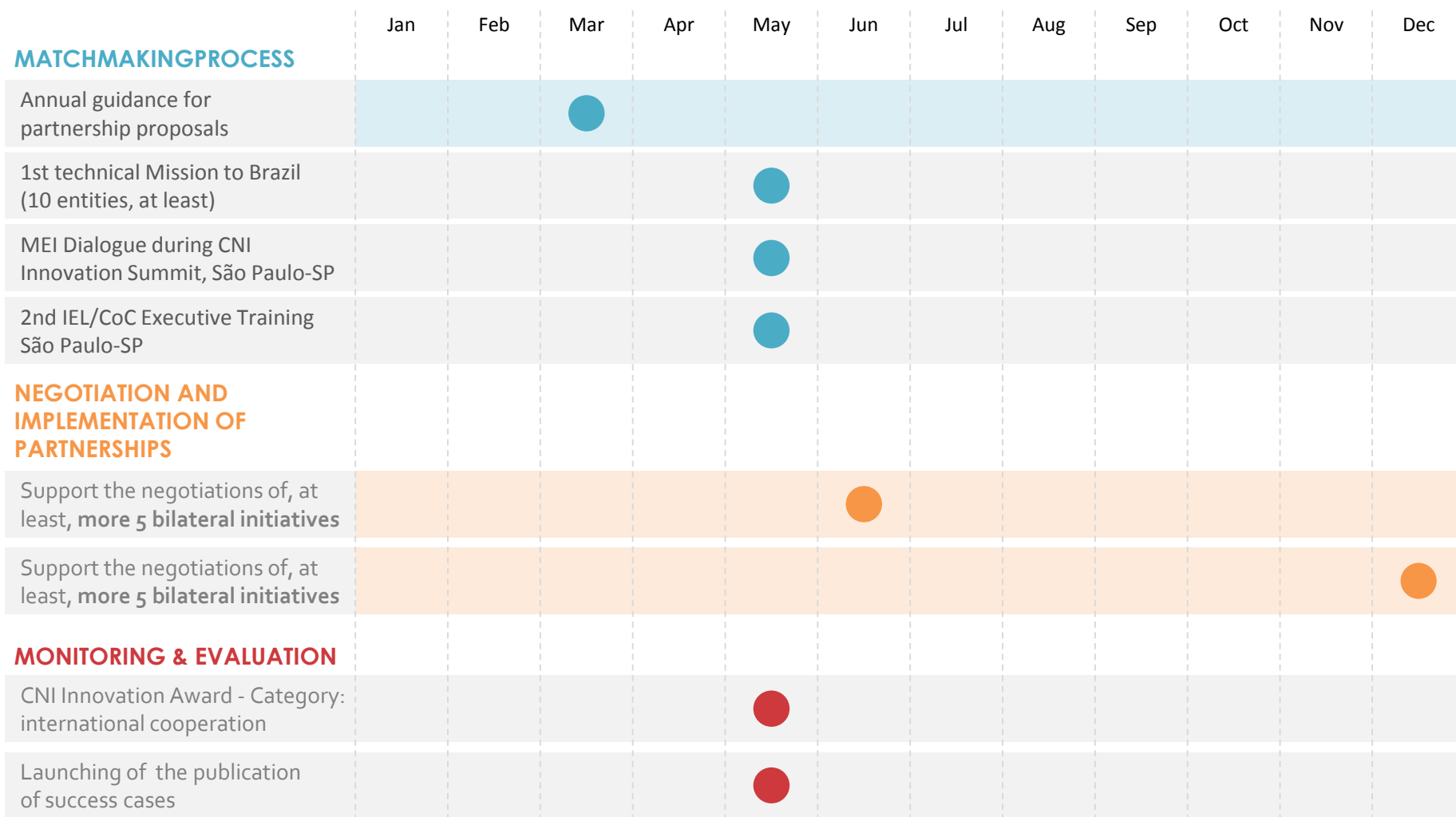
US-BRA ENTREPRENEURIAL INNOVATION PARTNERSHIP

MILESTONES AND GOALS IN 2016



US-BRA ENTREPRENEURIAL INNOVATION PARTNERSHIP

MILESTONES AND GOALS IN 2017



US-BRA ENTREPRENEURIAL INNOVATION PARTNERSHIP

QUESTIONS & ANSWERS

1 **How do I approach a potential partner in Brazil? And abroad?**

CNI in Brazil and CoC in the U.S. will help in initial connections.

2 **How can CNI and CoC help?**

In the matchmaking process (through a web platform, technical missions, workshops and executive trainings), in the negotiation and implementation of partnerships (in regard to legal and financial issues), in the evaluation and recognition (through reports, workshops and awards)

3 **What are the opportunities for bilateral cooperation?**

Concentrated in collaborative R&D in the areas of energy, environment, materials, ICTs, biosciences and construction.

4 **Where can I find information about the participating institutions?**

Brochures are available at the entrance and soon information will be on the innovation platform.

5 **Who can propose a partnership? When?**

Any company or research institute from both countries can submit a proposal at any time. Guidance, forms and additional instructions will be available on the web platform

6 **How long can a partnership last?**

Specific partnerships will be independently signed, hence the duration will be individually established. The MOU will be valid for 3 years and can be extended for the same period.

7 **How will the projects be funded?**

By different sources, ranging from the enterprises, R&D Centers and government agencies.

8 **How to find talents (researchers) to act in bilateral innovation projects?**

Researchers can be found through IEL's platforms and services.